

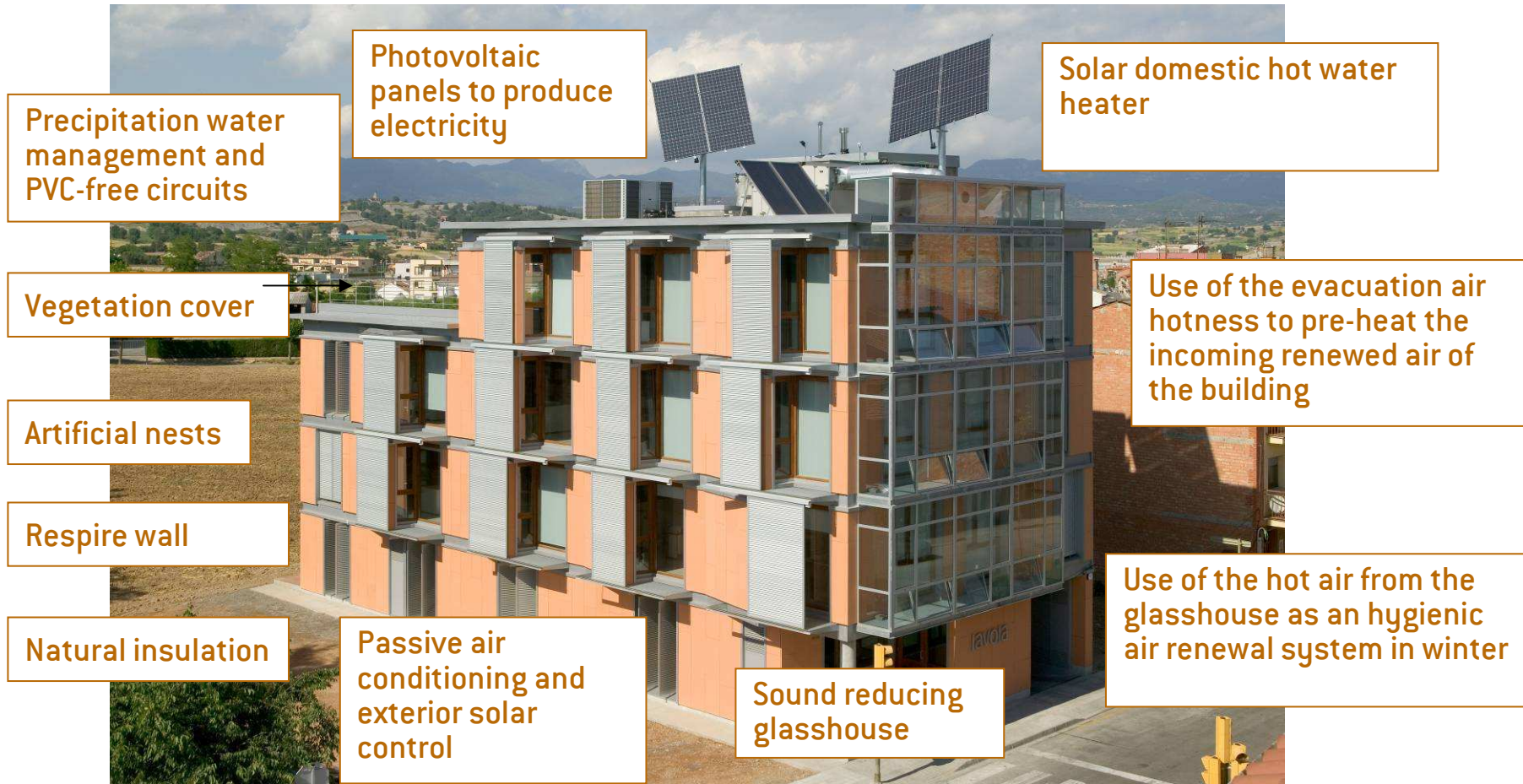
Welcome to the Ecobuilding

lavola

Serveis per a la sostenibilitat

25
ANIVERSARI
1981-2006

DESIGN AND ARCHITECTURE, THE BEST SOLUTIONS APPLIED



DESING AND ARCHITECTURE, THE BEST SOLUTIONS APPLIED

Hygienic air management depending on environmental quality

Low flow bathroom fittings and taps

Low energy-consuming and low noise lift

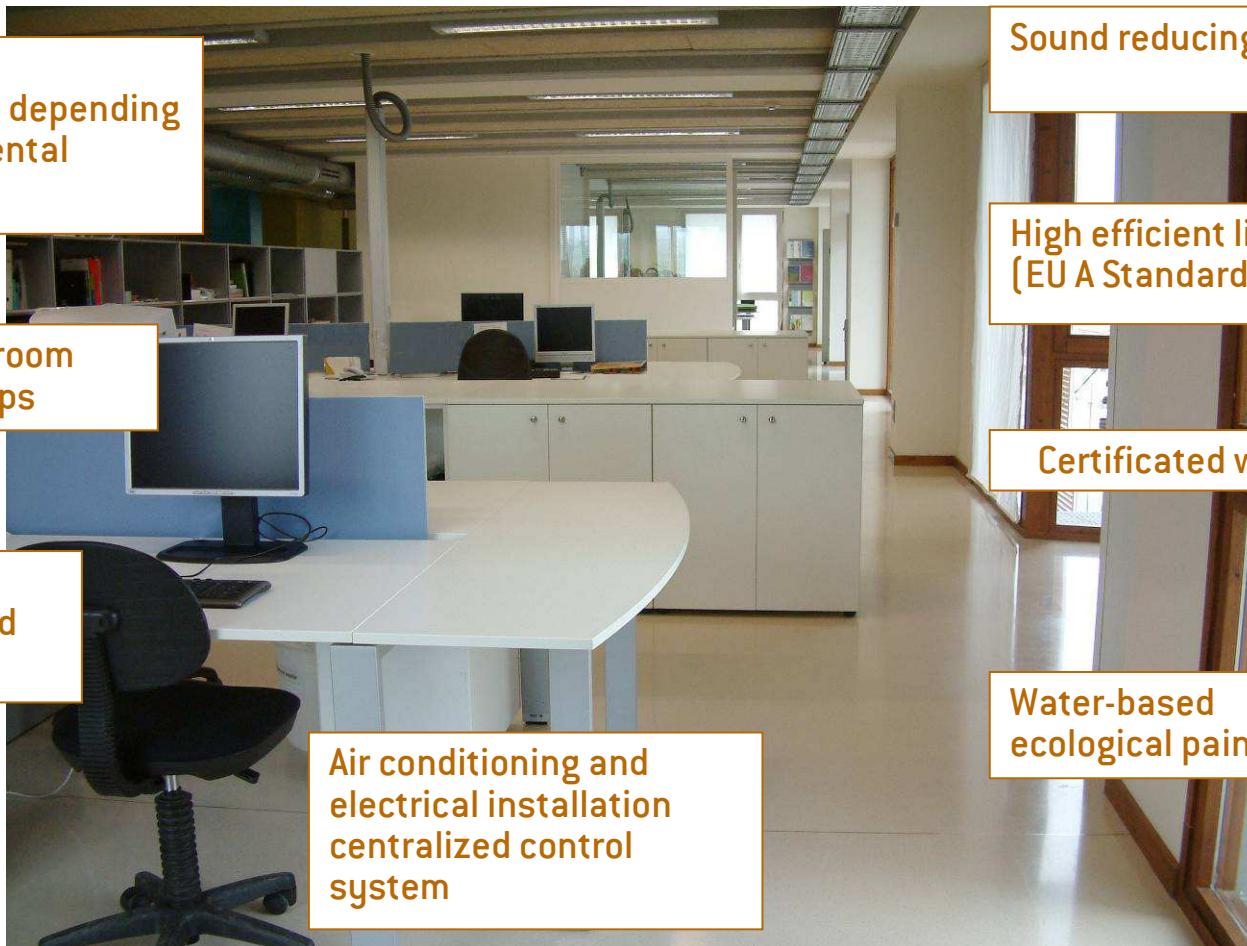
Air conditioning and electrical installation centralized control system

Sound reducing ceiling

High efficient lighting (EU A Standard)

Certificated wood

Water-based ecological paint



lavola

Serveis per a la sostenibilitat

SAVING FORECAST REGARDING A CONVENTIONAL BUILDING

- The building **uses its own resources** such as precipitation water or solar energy to produce domestic hot water as well as electricity.
- **40% saving** in lighting electricity
- **15% saving** in the other uses of electricity
- **40 % saving** in natural gas for heating and air conditioning
We consume around 50 kWh/m² per year

SAVING FORECAST REGARDING A CONVENTIONAL BUILDING

- **60% saving in natural gas** to produce domestic hot water
- **Between 20% and 40% saving in water.** We'll cover between 27% and 47% of the building global needs depending on the precipitations.
- The energetic saving forecasted and the solar energy management, this building meets the Kyoto Protocol objectives, saving **13.500 Kg of CO₂ emissions per year**. This reduction is bigger if we take into account the equipment useful life or all the saving we get in air heating and conditioning regarding a conventional building.

Manlleu, November 2007

lavola

Serveis per a la sostenibilitat

25
ANIVERSARI
1981-2006